

1. INSTALLATION PROCEDURE

1.1. PRECONDITIONS

1. Connect the Modem Using the USB cable. Refer the hardware installation section of the User Manual.
2. CD with USB Drivers or Drivers saved in a specific location on the user PC/laptop.

1.2. WINDOWS 98 INSTALLATION PROCEDURE

1. Once the Modem is connected and Powered ON the following window appears



Figure 1: Found New Hardware

2. The Computer will detect the new hardware device and displays a window as shown below for new hardware installation.

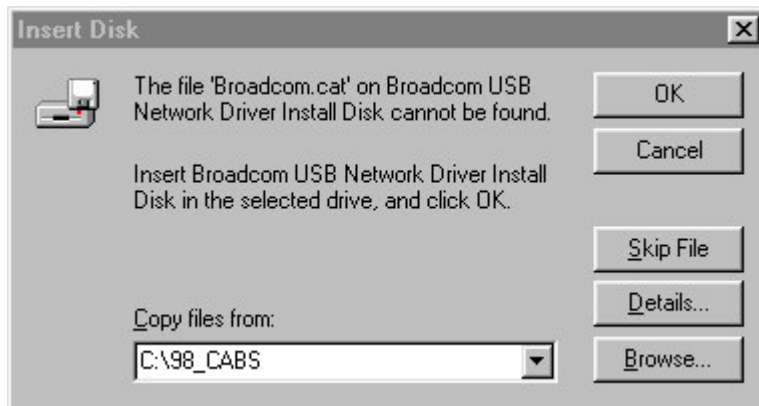


Figure 2: Insert Disk

3. Insert the CD containing the USB drivers into the CDROM drive. Browse the CD and go to the driver section. Click on the **OK** Button. If incase the drivers are available on a specific location on the computer, browse to that particular location and click on the **OK** button. This is shown in the images below:

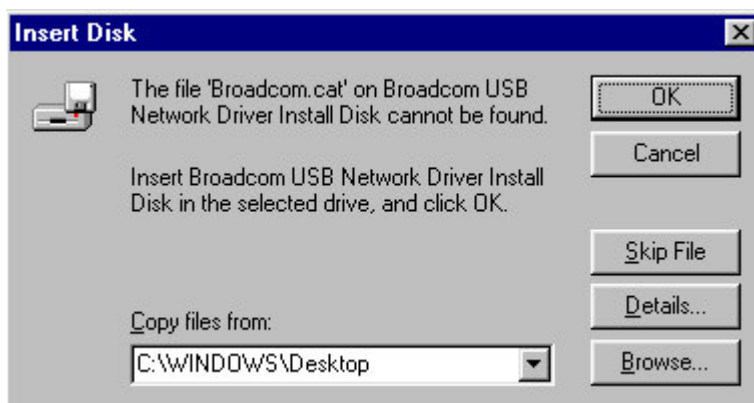
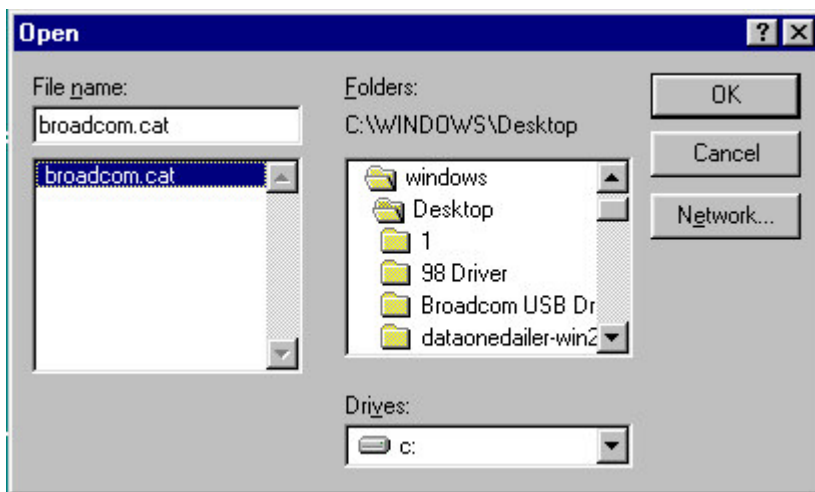


Figure 3: Open and Browse directory

4. Upon OK the USB driver files are installed as shown below:

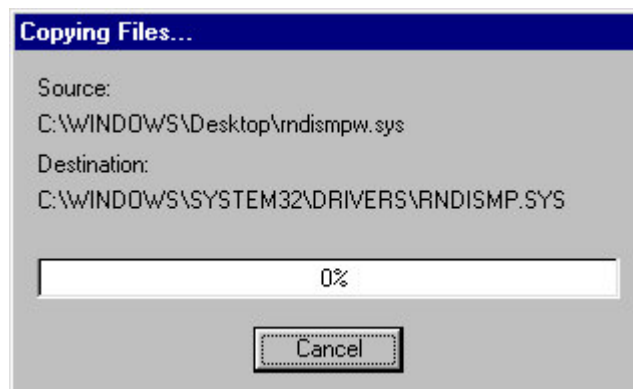


Figure 4: Copying Files

5. The files are now copied and the drivers are installed.

1.3. WINDOWS 2000 INSTALLATION PROCEDURE

1. Once the Modem is connected and Powered ON the following window appears

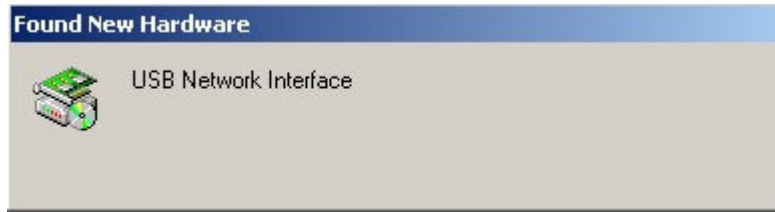


Figure 5: Found New Hardware

2. The Computer will detect the new hardware device and displays a window as shown below for new hardware installation.



Figure 6: Found New Hardware Wizard

3. Click on the **Next** button. The following window appears.



Figure 7: Install Hardware Device Drivers

4. Select "**Search for suitable driver for my device (recommended)**". Click on the **Next** button.



Figure 8: Locate Driver Files

5. Enable the **CD-ROM drivers** option. Insert the CD containing the USB drivers into the CDROM drive. Click on the **Next** button. If in case the drivers are available in a location on the PC, then select the **Specify a location** option and browse to the directory where the drivers are stored.
6. Windows will search for the suitable driver from the location and displays the window as shown below. Click on the **Next** button.

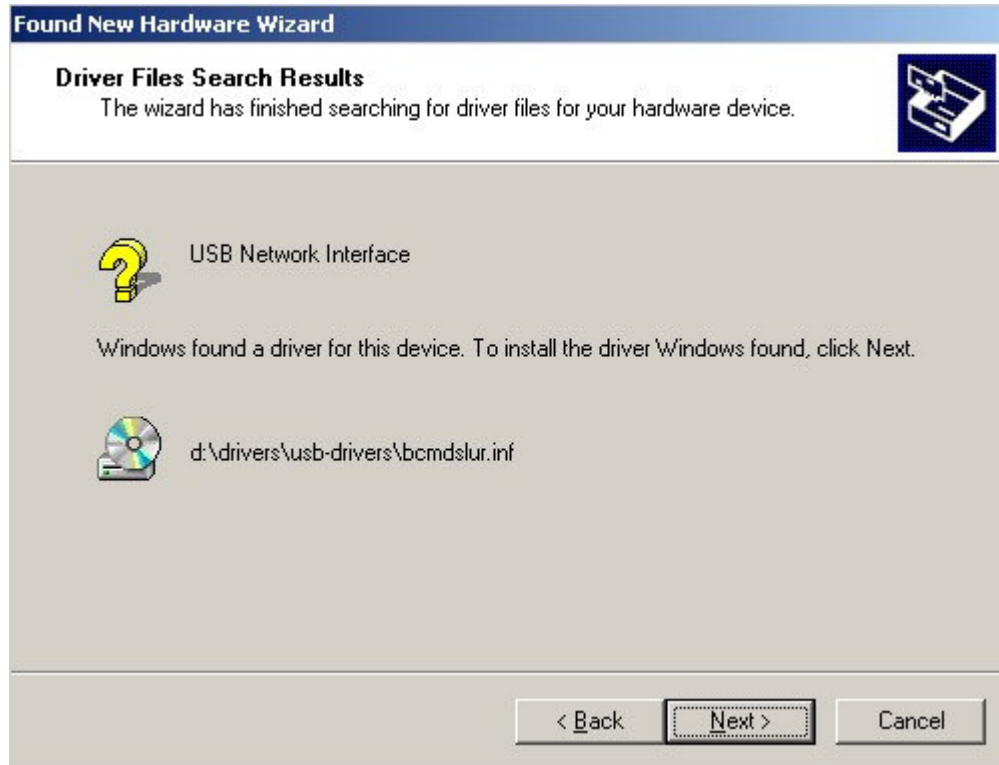


Figure 9: Driver Files Search Results

7. Click on **Yes** button on the window shown below.

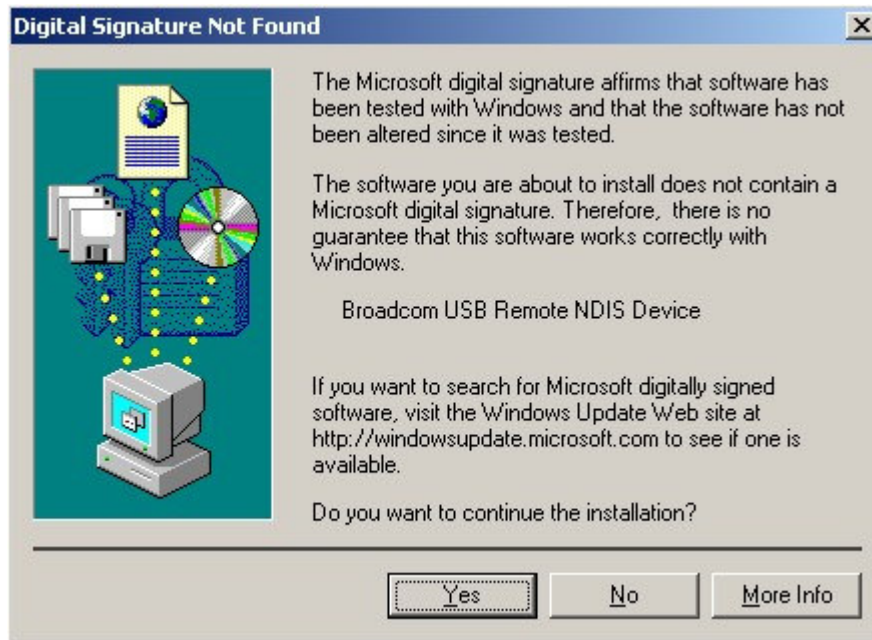


Figure 10: Digital Signature Not Found

8. The Installation is now completed. In the window below click on the ***Finish*** button.



Figure 11: Finish

1.4. WINDOWS XP INSTALLATION PROCEDURE

1.4.1. Prerequisite

Check the following before installation

1. Go to **My computer**→**Properties**→**hardware**→**Driver Signing**



Figure 12: System properties

2. Click on Driver Signing. The following window appears. Make sure the ***ignore –Install that software anyway and don't ask for my approval*** option is selected.

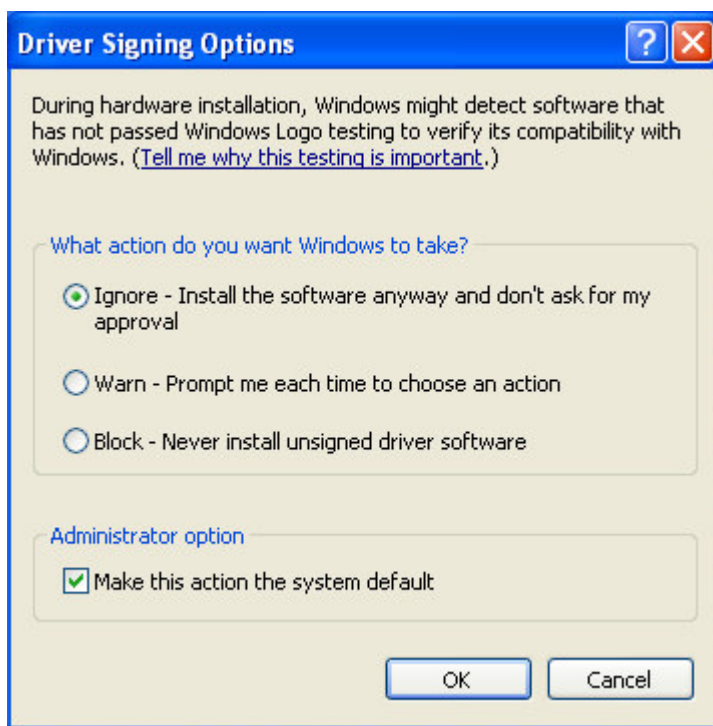


Figure 13: Driver Signing Options

1. Once the Modem is connected and Powered ON the following window appears. Select the **Yes, this time only** radio button and click on the **Next** button



Figure 14: Found New Hardware Wizard

2. The following window appears. Now insert the CD containing the USB drivers in the CDROM drive. Click on the Next button.



Figure 15: Insert Disk

3. The machine searches for the suitable drivers from the CD. This is shown below.



Figure 16: Search for drivers

4. In the below window click on the **Continue Anyway** button to proceed with the installation.



Figure 17: signature

5. The system takes backup of the old files as shown below.

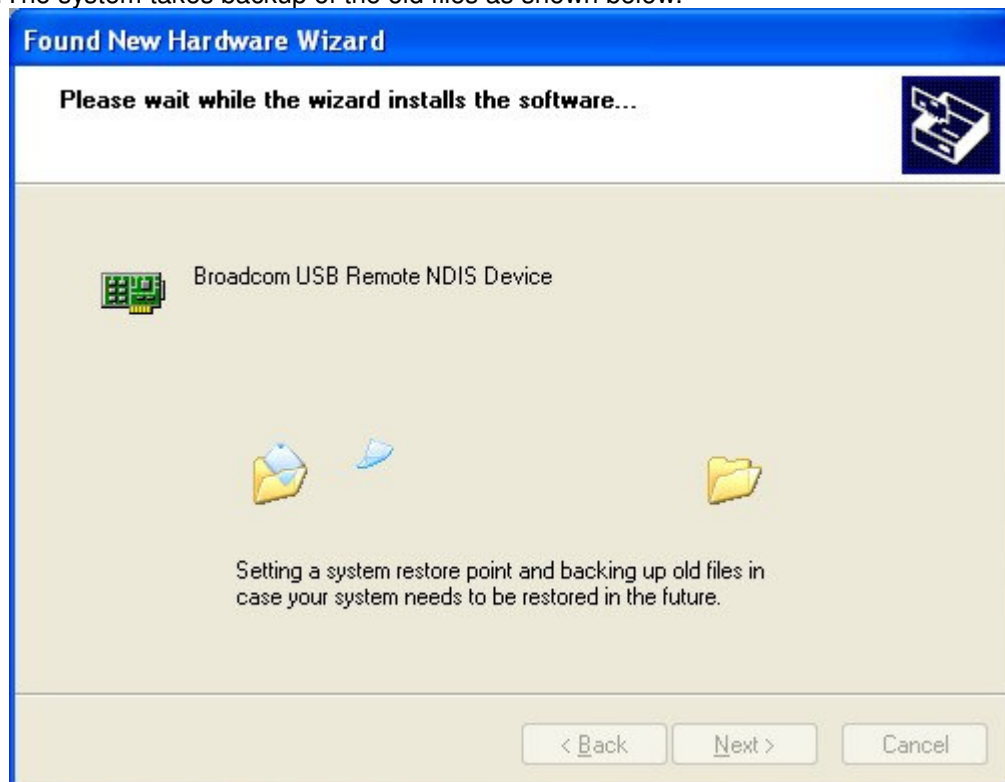


Figure 18: Backing up old files

6. Now the drivers are installed. Click on the **Finish** button to complete the installation.



Figure 19: Finish

1.5. UNINSTALL PROCEDURE

For Uninstall the USB driver,

- Go to "**My Computer → Properties → Hardware → Device Manager → Network Adaptors**".

Select the Broadcom USB driver and click on the Remove/uninstall option